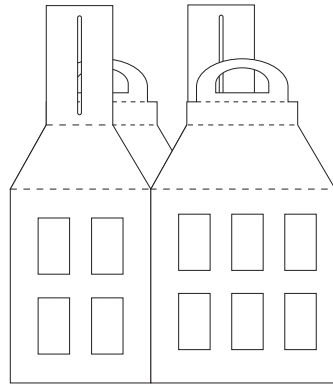
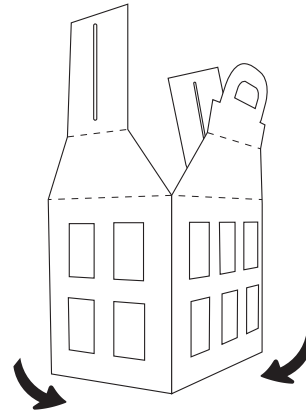




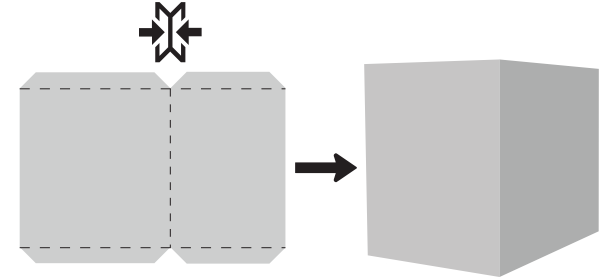
#4435-08 CARDBOARD
WISHING WELL CADDY
ASSEMBLY INSTRUCTIONS



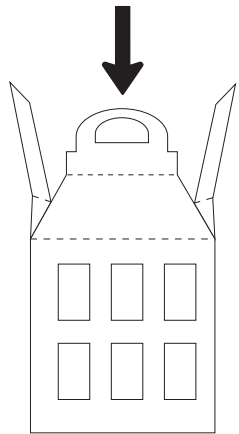
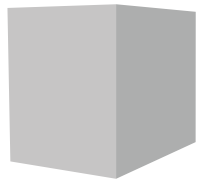
1. Lay box down flat.



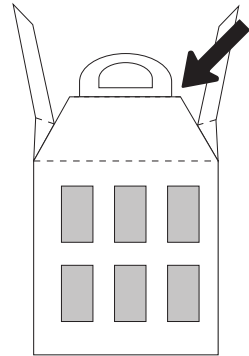
2. Push opposite corners
together to create the
box. Flatten the bottom.



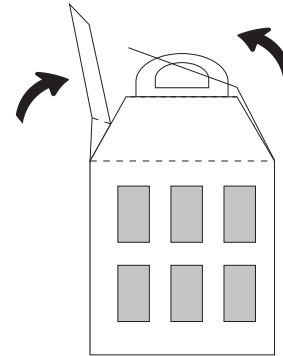
3. Fold in tabs on the plastic
sheet to create the insert.



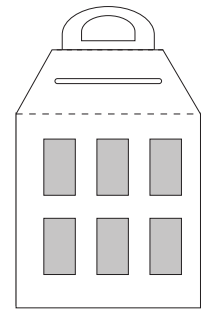
4. Place the plastic insert
into the box.



5. Bring handles together
so there is a flat area
on top of the box.



6. Fold in the side tabs
over the handle.



7. You now have a
complete Wishing
Well Caddy!